

| Engine cooling | Water pump | Fitting instruction | All

Water pump fitting instructions

Introduction

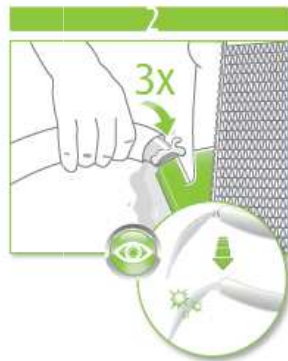
Most of water pump warranty cases are due to a non respect of fitting instruction. With this fitting instruction, Valeo Service details the different step of water pump fitting instruction in order to avoid failure.

Fitting instruction

Step 1 : Drain the cooling system



Step 2 : Flush the cooling system



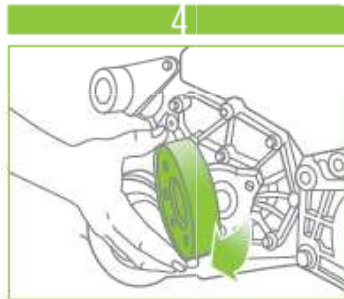
Thoroughly flush the cooling system, including radiator and hoses etc otherwise when the pump starts working the coolant may move dirt through the cooling system, causing pump failure.
Valeo recommends to repeat the operation 3 times

Step 3 : Dismount the belt



Respect dismounting advice supply by the car manufacturer

Step 4 : Dismount the tensioner



Respect dismounting advice supply by the car manufacturer

Step 5: Dismount the water pump



Step 6: Clean the engine surface



Valeo recommends to clean the engine surface in order to ensure a perfect sealing between engine and water pump.

Step 7: Check the new water pump



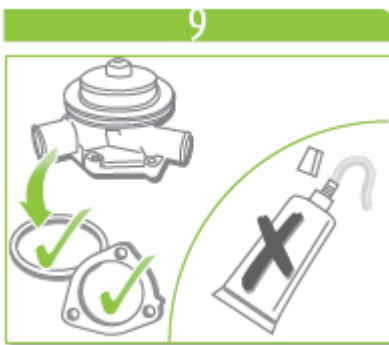
Verify that you choose the right application

Step 8: Control free rotation



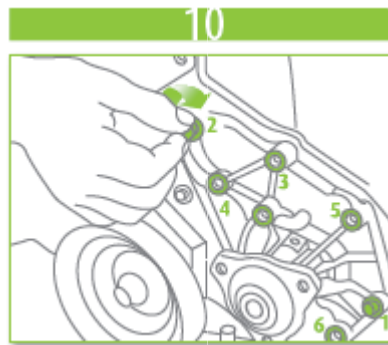
Control that the water pump can rotate without strength

Step 9: Fit the water pump



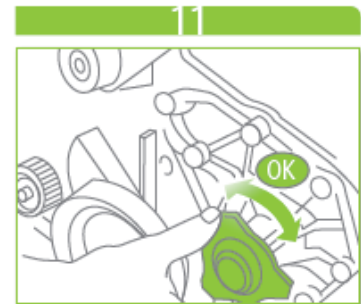
For water pump supply with seal, seal paste is not needed

Step 10: Fit the water pump



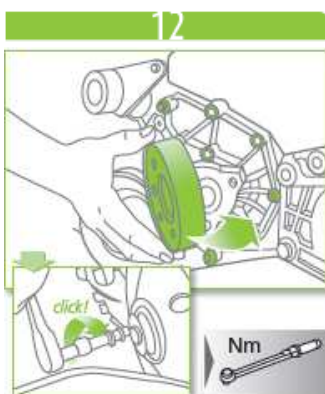
Apply the torque respecting a star like sequence

Step 11: Control free rotation



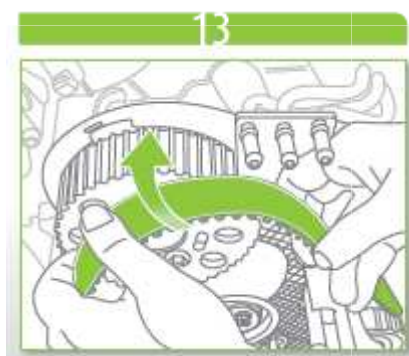
Control that the water pump can rotate without strength

Step 12: Fit the tensioner



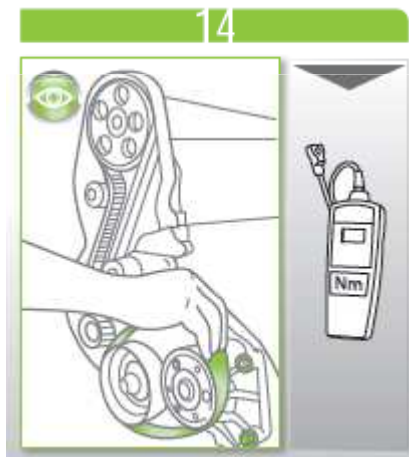
Valeo recommends to change the tensioner

Step 13: Fit the belt



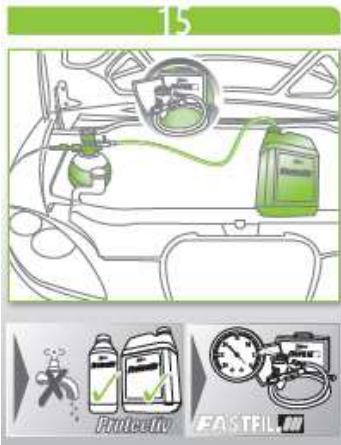
Valeo recommends to change the belt.

Step 14: Fit the belt



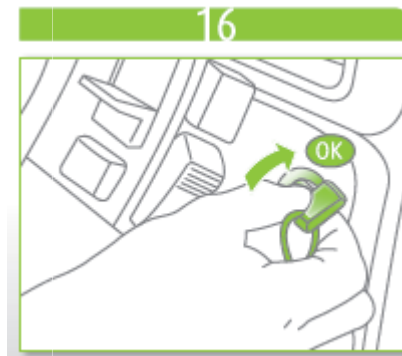
Correct belt assembly is required as excessive belt tension has a negative impact on the bearings and may cause premature water pump failure. Use a timing belt tension test device.

Step 15: Fulfill and bleed coolant circuit



Only use the correct coolant fluid containing corrosion inhibitor recommended by car manufacturer. Valeo recommends to use the Fast Fill device

Step 16: Test the water pump



Check the efficiency of the cooling system. Control that there is no leakage and that all coolant system component are running well.

VALEO advice:

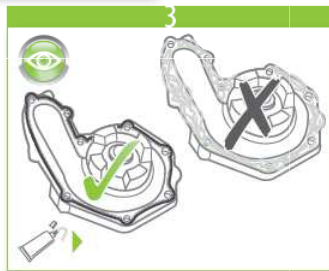
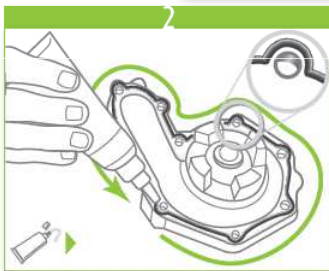
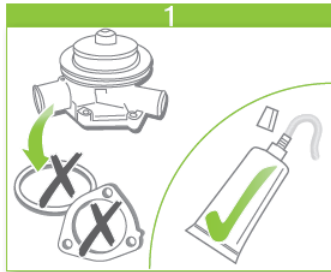
Before fitting a new water pump, please carry out the following:

- Change the coolant fluid.**
- Bleed coolant circuit**
- Only use the correct coolant fluid containing corrosion inhibitor recommended by car manufacturer.**
- Check and replace if necessary thermostat, pulley and fan switch**
- Change the belt and the tensioner**

When do you to use sealant paste ?

Sealant paste is mandatory for water pump supply without gasket. A specific label is stick on the box.

Valeo



Valeo recommends to apply only a little line of sealant paste. Otherwise, you will contaminate the water pump and create leakage.

List of Valeo water pump delivered without gasket.

506967	Waterpump Grande Punto 1.2i, 1.4i, Abarth
506397	Waterpump FIAT PUNTO
506919	Waterpump BMW-SERIE 1(E87)-116i
506803	Waterpump ' Chrysler-Sebring
506573	Waterpump RENAULT CLIO
506686	Waterpump FIAT ALBEA
506640	Waterpump FIAT PUNTO
506598	Waterpump FIAT BRAVA
506789	Waterpump FORD TRANSIT
506456	Waterpump JEEP
506788	Waterpump MINI 1,6
506437	Waterpump NISSAN 100NX
506717	Waterpump NISSAN MICRA
506564	Waterpump RENAULT CLIO
506637	Waterpump RENAULT ESPACE
506579	Waterpump RENAULT LAGUNA
506855	Waterpump VAG-Ibiza Fabia
506587	Waterpump SEAT TOLEDO
506903	Waterpump SUZUKI GRAND VITARA 2.5V6, VITARA

